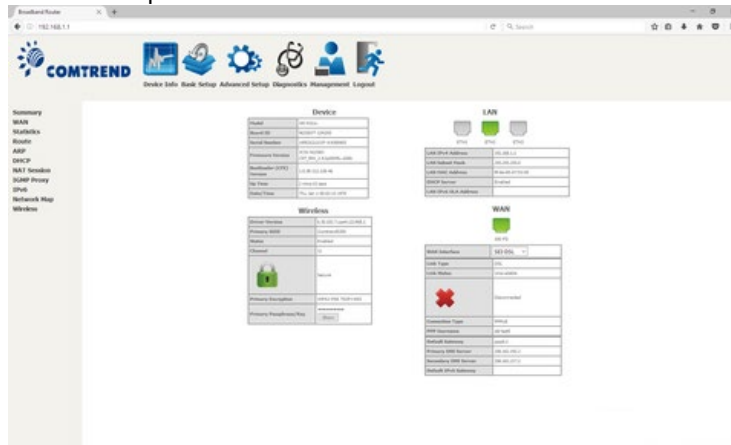


Comtrend AR-5312U Router Topics

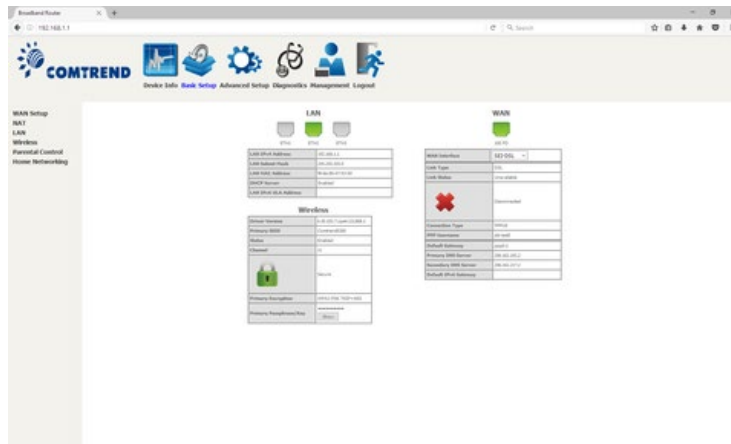
Configuring Pinholes/Port Forwarding
Enabling WIFI (wireless)

Configuring Pinholes/Port Forwarding

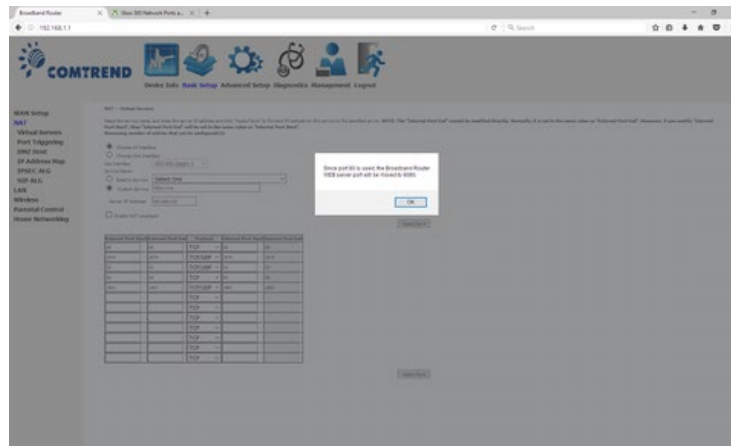
- 1) From a web browser, go to "http://192.168.1.1". Login with the username "admin" and the password "admin".
- 2) Click the "Basic Setup" link on the top menu bar.



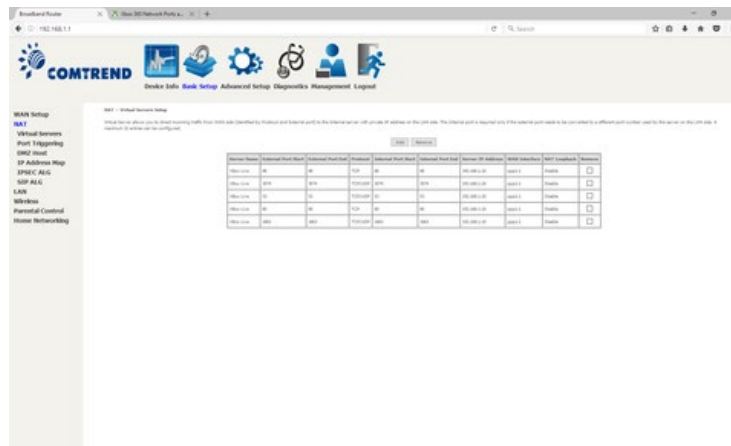
- 3) Click on the "NAT" link on the left.



- 4) Click on the "Add" button.



8) You are now done.



[Back to the Top](#)

Configuring WIFI/Wireless

You have your choice of one of two ways to enable the wireless access point in your SEI provided Comtrend AR-5312u:

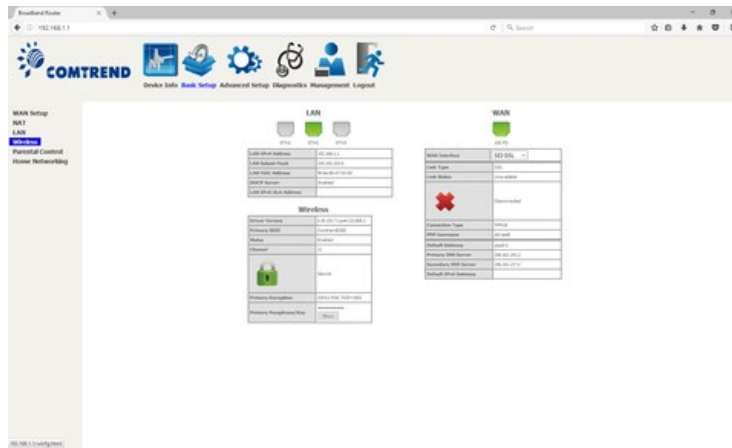
- A) Easy way by pressing a button and using preset defaults.
- B) Personalized approach (you can set your own SSID & security).

Easy setup:

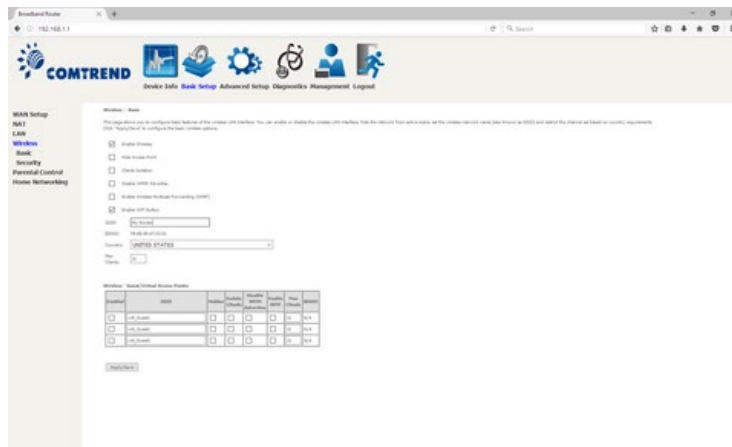
- 1) On the front of your modem, there is a small round button labeled WIFI/WPS. Press and hold this button for approximately 20 seconds until the "WIFI" LED turns on.
- 2) On your WIFI capable devices, you will then connect to the SSID "ComtrendXXXX" where XXXX are the last 4 characters (in capital letters) of your modems MAC address. There is a sticker on the bottom of your modem with this MAC address.
- 3) Security is enabled by default using WPA2. The WPA2 encryption key/passphrase is located on the bottom of the router under WIFI Key. Please note that the WIFI Key is case sensitive.

Personalized setup:

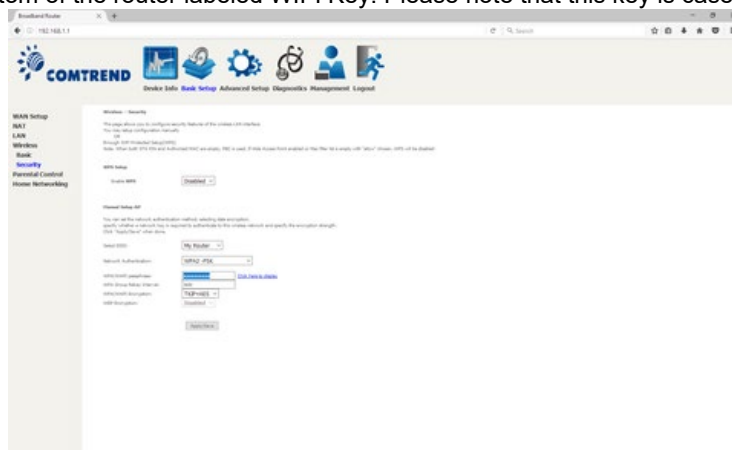
- 1) From a web browser, go to "http://192.168.1.1". Login with the username "admin" and the password "admin".
- 2) Click the Basic Setup link on the top menu bar.



3) Check mark "Enable Wireless", and change the "SSID" if you wish, then click "Apply/Save". (By default, wireless is disabled but the SSID is ComtrendXXXX, where XXXX are replaced with the last 4 characters of your routers MAC address).



4) Click the "Security" link on the left. You can change your encryption passphrase/key here, or you can view the current one as well. If you change it, be sure to click the "Apply/Save" button. The default passphrase/key is on the sticker located on the bottom of the router labeled WIFI Key. Please note that this key is case sensitive.



5) Click on the "Apply/Save" button. Wireless access is now enabled.

[Back to the Top](#)

800-925-6746 | 812-574-8800 | 812-667-8800
812-744-8800 | 812-839-8800 | 812-873-8800

888-200-8077

©2019 SEI Communications. All Rights Reserved. [Legal](#), [Privacy](#), and [Security](#) Notices.